

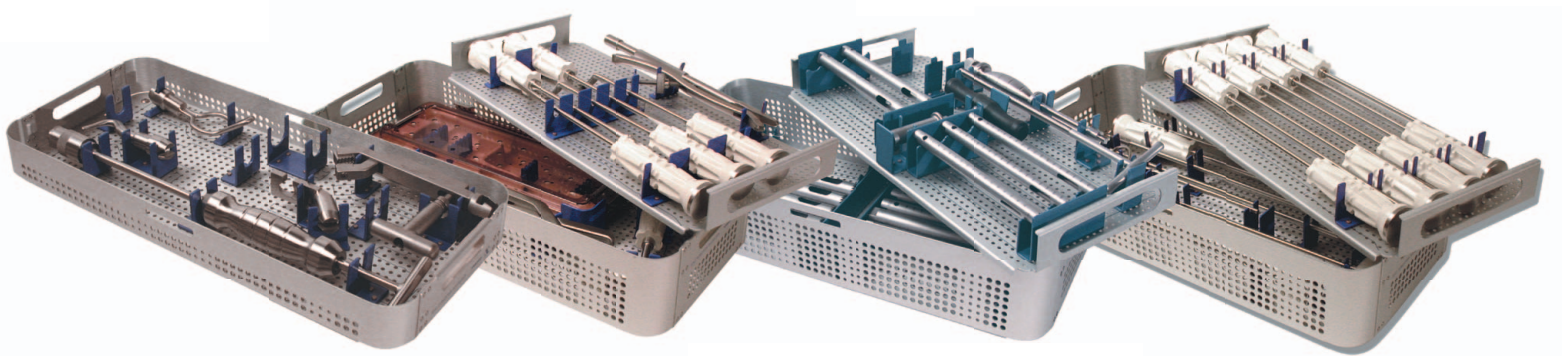


# HIP REVISION SYSTEM

**The Symmetry Medical Hip Revision System includes everything** needed to revise a total hip. Our system is completely modular with an Acetabular Tray, Femoral Tray, Extraction Tray and Trepphine Tray. The combination of the most widely used cement resection tips and removal instruments accommodate femoral and acetabular component removal.

The system cases are appropriately organized to accommodate specific procedures as deemed necessary during surgery.

- Universal set accommodates Femoral and Acetabular component removal
- Extended length for distal cement removal
- Features most widely used cement resection tips and removal instruments in convenient trays
- Radel® R handles offer improved strength, crack resistance and optimum endurance to repeated steam autoclaving



**The trusted global source of innovative medical device solutions for today's needs and tomorrow's growth.**



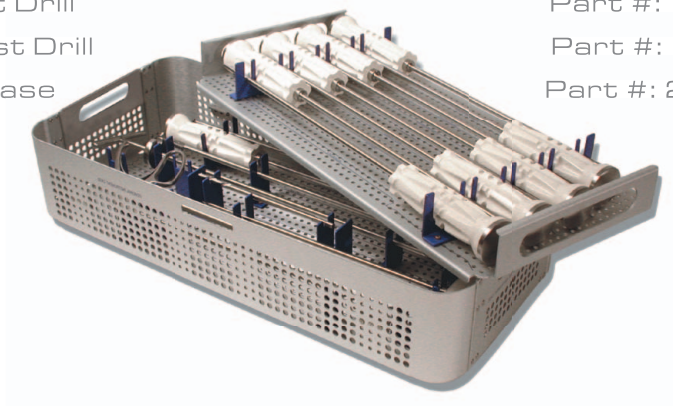
**SYMMETRY Medical<sup>®</sup>** Inc.

3724 North State Road 15, Warsaw, IN 46582, USA  
T: +1.574.267.8700 Fax: +1.574.267.4551  
[www.symmetrymedical.com](http://www.symmetrymedical.com)

## Femoral Tray Part Numbers

### Complete Femoral Tray Part #: 30-037-000

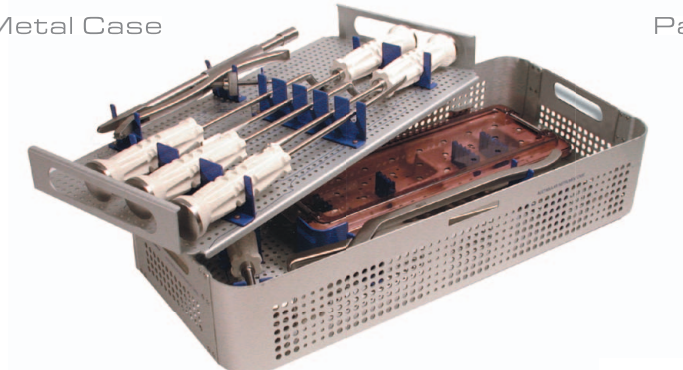
Crochet Hook	Part #: 10-056-000
Flag Splitter	Part #: 10-001-000
"V" Splitter	Part #: 10-002-000
Chisel, 8mm x 17"	Part #: 10-003-000
Modified Angled Gouge	Part #: 10-004-000
Straight Gouge	Part #: 10-005-000
Long Rongeur w/Serrated Teeth, 300mm	Part #: 15-003-000
Reverse Curette, 6mm x 17"	Part #: 10-054-000
Reverse Curette, 7mm x 17"	Part #: 10-006-000
Reverse Curette, 9mm x 17"	Part #: 10-007-000
Reverse Curette, 11mm x 17"	Part #: 10-055-000
"X" Osteotome, 7mm x 17"	Part #: 10-008-000
Conical Tap, 9mm	Part #: 12-008-000
Conical Tap, 11mm	Part #: 12-009-000
1/4" Twist Drill	Part #: 15-001-000
5/16" Twist Drill	Part #: 11-001-000
Metal Case	Part #: 25-020-000



## Acetabular Tray Part Numbers

### Complete Acetabular Tray Part #: 30-036-000

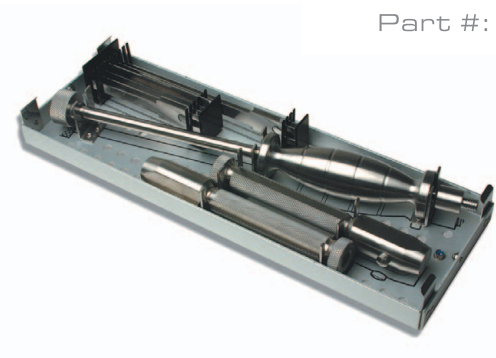
Acetabular Gouge, 48mm x 1/2" Wide	Part #: 10-057-000
Acetabular Gouge, 52mm x 1/2" Wide	Part #: 10-058-000
Acetabular Gouge, 56mm x 1/2" Wide	Part #: 10-059-000
Round Acetabular Cement Splitter	Part #: 10-011-000
Acetabular Component Gripper	Part #: 12-006-000
Acetabular Component Forceps	Part #: 14-001-000
Slotted Mallet w/Delrin Cap	Part #: 10-102-000
Curved Acetabular Chisel	Part #: 10-010-000
Flexible Osteotome Set	Part #: 30-005-000
Metal Case	Part #: 25-021-000



## Flexible Osteotome Part Numbers

### Complete Flexible Osteotome Tray Part #: 30-037-000

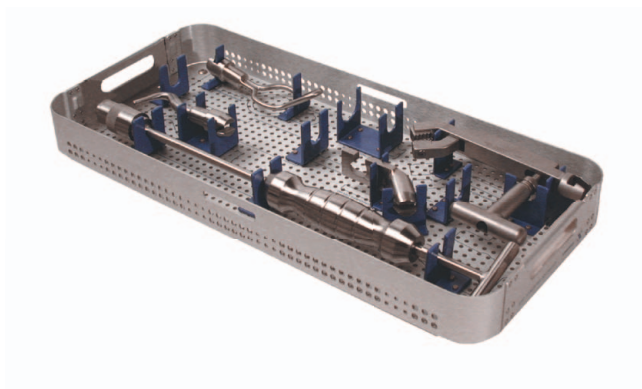
Small Slap Hammer	Part #: 12-007-000
Thin Osteotome Blade, 8mm x 3"	Part #: 11-002-000
Thin Osteotome Blade, 10mm x 3"	Part #: 11-003-000
Thin Osteotome Blade, 12mm x 3"	Part #: 11-004-000
Thin Osteotome Blade, 20mm x 3"	Part #: 11-005-000
Thin Osteotome Blade, 8mm x 5"	Part #: 11-009-000
Thin Osteotome Blade, 10mm x 5"	Part #: 11-008-000
Thin Osteotome Blade, Curved, 12mm	Part #: 11-006-000
Thin Osteotome Blade, Curved, 20mm	Part #: 11-007-000
Quick-Coupling Handle (2 per set)	Part #: 10-020-000
Metal Case	Part #: 25-005-000



## Extractor Tray Part Numbers

### Complete Extractor Tray Part #: 30-035-000

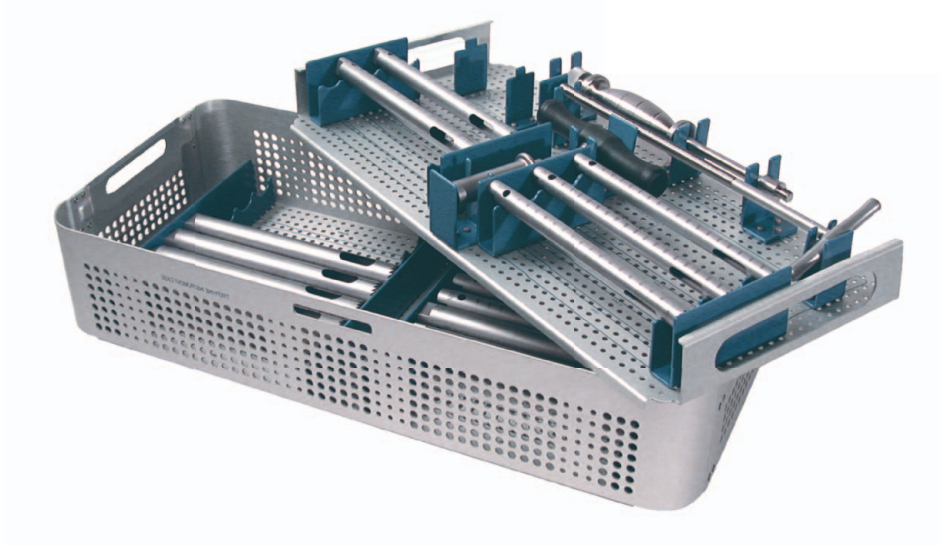
Femoral Extractor	Part #: 12-001-000
Universal Modular Hip Stem Extractor	Part #: 12-031-000
One-Piece Stem Adapter	Part #: 12-004-000
Closed Loop Extractor	Part #: 12-029-000
Hook Stem Extractor	Part #: 12-030-000
Metal Case	Part #: 25-022-000



## Trephine Tray Part Numbers

### Complete Trephine Tray Part #: 30-014-000

Trephine 11 mm ID x 8"	Part #: 10-063-000
Trephine 12mm ID x 8"	Part #: 10-064-000
Trephine 13mm ID x 8"	Part #: 10-065-000
Trephine 14mm ID x 8"	Part #: 10-066-000
Trephine 15mm ID x 8"	Part #: 10-067-000
Trephine 16mm ID x 8"	Part #: 10-068-000
Trephine 17mm ID x 8"	Part #: 15-069-000
Trephine 18mm ID x 8"	Part #: 10-070-000
Trephine 19mm ID x 8"	Part #: 10-071-000
Trephine 20mm ID x 8"	Part #: 10-072-000
Trephine 21 mm ID x 8"	Part #: 10-073-000
Trephine 22mm ID x 8"	Part #: 10-074-000
Trephine 23mm ID x 8"	Part #: 10-099-000
Trephine 24mm ID x 8"	Part #: 10-101-000
Slap Hammer Shaft	Part #: 12-028-000
T-Bar Stem Extractor	Part #: 10-062-000
Wrench	Part #: 10-075-000
Quick Connect T-Handle	Part #: 10-023-000
Metal Case	Part #: 25-023-000



Contact your local Sales Manager or visit  
[www.symmetrymedical.com](http://www.symmetrymedical.com) for more information.



**SYMMETRY Medical<sup>®</sup>**

3724 North State Road 15, Warsaw, IN 46582, USA  
T: +1.574.267.8700 Fax: +1.574.267.4551  
[www.symmetrymedical.com](http://www.symmetrymedical.com)